



#### Some benefits:

- \_ quick sieve and knife change
- \_ no need to adjust the rotor knife
- \_ performance-enhancing diagonal cut
- \_ very quick and easy to clean
- \_ ideal granulate quality, similar grain
- \_ solid rotor with high moment of inertia
- \_ outer bearing assembly fitted, dust protection
- \_ CE certified

# series 600

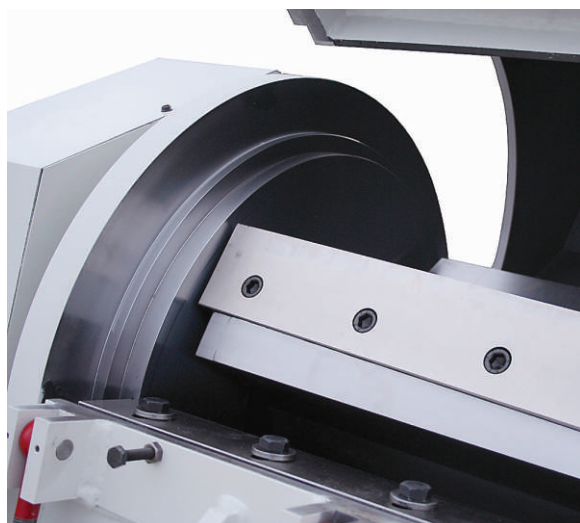


- Working width  
**600 / 1.000 / 1.500 mm**
- Rotor diameter  
**600 mm**
- Motor output  
**37-110 kW**
- Number of rotor knives  
**3-7**
- Number of stator knives  
**2-4**
- Rotor speed  
**380 r.p.m.**
- Nominal weight  
**appr. 5.000-11.000 kg**
- Grinding output  
**appr. 500-2.500 kg/h**
- Dimensions (WxLxH)  
**1.689x2.100x3.207 mm**

**M 1000/600**

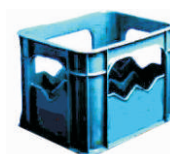
## Heavy-duty granulators for highest demands

*Series of Mega granulators for large and heavy parts*



The Hellweg 600 series granulators enable gentle and thorough granulation of thick-walled mouldings, sheets, sprue cakes, pipes and profiles, etc, on account of the extremely high stability of the entire machine housing and through the high moment of gyration of the massive rotor that is made from one solid piece of metal. Voluminous and large surface area plastic parts such as bumpers from the automotive industry or parts dismantled from old cars, plastic tanks, door interior claddings, etc can also be granulated.

A special rotor enables single stage granulation of even extremely massive lumps from production start-ups.



M 1000/600 detail solid rotor, bearing and chamber

application examples

more >>



# Hellweg granulators hold *Pole-Position*



*Hellweg Maschinenbau* constructs machinery and equipment in its own production facilities, including especially setting up of systems for specific customer tasks, for customers in the plastics and recycling industries throughout the world. The production range covers machine-side mills, granulating mills, edge strip granulators, edge strip feeding equipment, film shredders, as well as extraction and dust removal plant including accessories.



**Hellweg**

[www.cutting-mills.com](http://www.cutting-mills.com)



## series 600

Heavy-duty granulators for large and heavy parts

*Processing of massive lumps, pipes, plates, profiles and sprue cakes*

*Hellweg* granulators are used by plastic processing companies to compound thermoplastic waste arising from production – especially engineering thermoplastics such as ABS, PA, PBT, PC, POM, but also PE and PP, involving dosing of ground material again with virgin material during running production, or addition of the material in another application at a later stage. The material to be handled falls into the cutting chamber of the *Hellweg* granulator via a guiding chute and is repeatedly shredded by cutting between rotating and fixed knives, until it passes an attached sieve as ground material. The sieve extends over the lower half of the grinding chamber and is exchangeable. This enables appropriate sieve perforation to be used for the particle size required.

### Characteristics of *Hellweg* Mega-granulators:

- \_ highly precise production, housing welded
- \_ rotors produced from one solid piece of metal
- \_ high performance direct drive through transmission belts
- \_ high throughput at low drive power
- \_ wear resistant versions for reinforced plastics
- \_ noise absorbent hoppers, off-centre insertion guarantees self-dosing feeding behaviour, no dancing and hurling out of material
- \_ structural design for easy, complete cleaning through absence of dead corners and use of inspection openings
- \_ direct mounting of the knives on solid rotors, eliminating need for rotor knife adjustment
- \_ both rotor and stator knives can be re-sharpened many times due to their structural design
- \_ hydraulic opening device
- \_ extensive consideration of safety measures regarding risks according to the equipment safety law



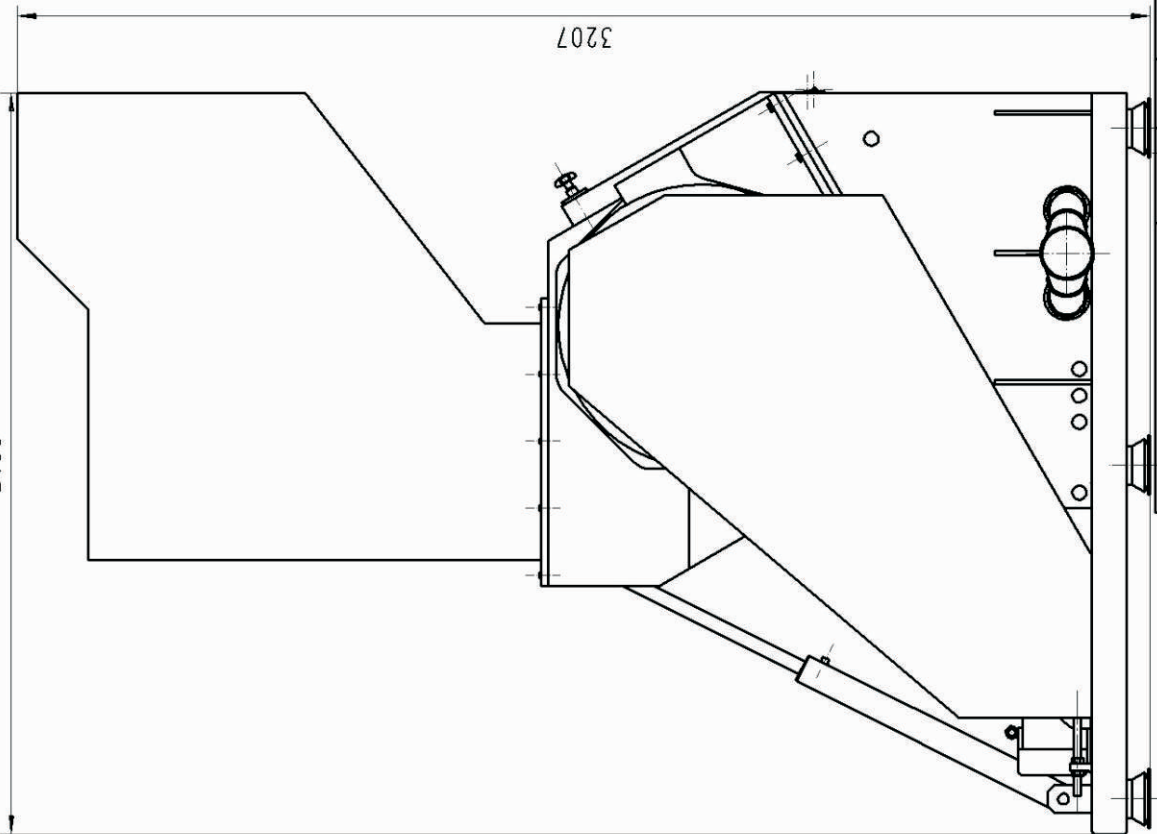
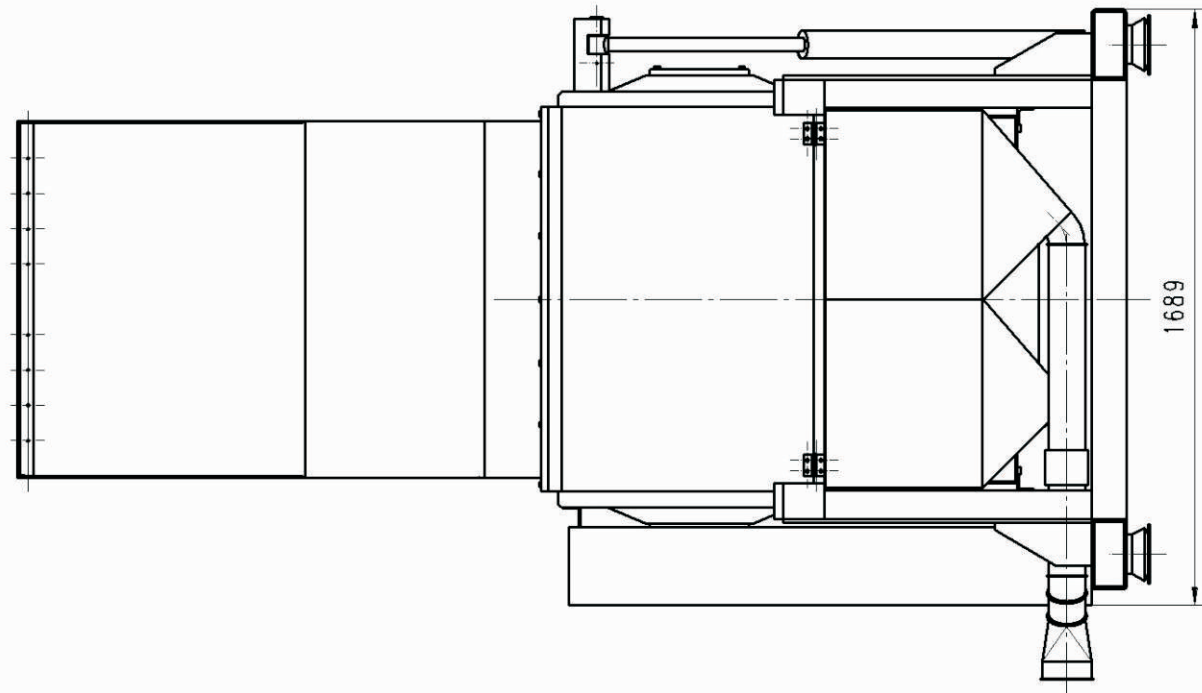
Model / Size	Working width	Rotor - Ø	Motor output	Number of rotor knives	Number of stator knives	Rotor speed	Nominal weight	Grinding output
M 600/600	600	600	30 - 45 kW	3-7	2	380 r.p.m.	appr. 5000 kg	appr. 500-1000 kg/h
M 1000/600	1000	600	37 - 75 kW	3-7	2-4	380 r.p.m.	appr. 7000 kg	appr. 700-1800 kg/h
M 1500/600	1500	600	45 - 110 kW	3-7	2-4	380 r.p.m.	appr. 9000 kg	appr. 900-2500 kg/h

Under reserve of technical changesments.

**Test it !**

After a brief agreement, simply send us a sample of the material to be granulated. We will then select a suitable granulator for your application and carry out trial granulation. We will then receive the result returned in the form of granulate for your examination, without any obligation on your part.

**Hellweg Maschinenbau** GmbH & Co.KG  
Vennstr. 10 · 52159 Roetgen / Germany  
Fon +49 2471 4254 · Fax +49 2471 1630  
[info@hellweg-maschinenbau.de](mailto:info@hellweg-maschinenbau.de)  
[www.hellweg-maschinenbau.de](http://www.hellweg-maschinenbau.de)



**M 1000/600**

- Working width  
\_ **1.000 mm**
- Rotor diameter  
\_ **600 mm**
- Motor output  
\_ **45-75 kW**
- Number of rotor knives  
\_ **3-7**
- Number of stator knives  
\_ **2**
- Rotor speed  
\_ **490 r.p.m.**
- Nominal weight  
\_ **appr. 4.500 kg**
- Grinding output  
\_ **appr. 750-2.500 kg/h**
- Dimensions (WxLxH)  
\_ **1.689x2.100x3.207 mm**

[illegible]